

WATER CONSERVATION KIT/VACUUM PUMP MODIFICATION

APPLICATION

STERIS Water Conservation Kits/ Vacuum Pump Modification can be used on any Amsco Eagle® 2000, Eagle 3000 Stage 2 or Eagle 3000 Stage 3 Medium (24x36) Vacuum sterilizer.

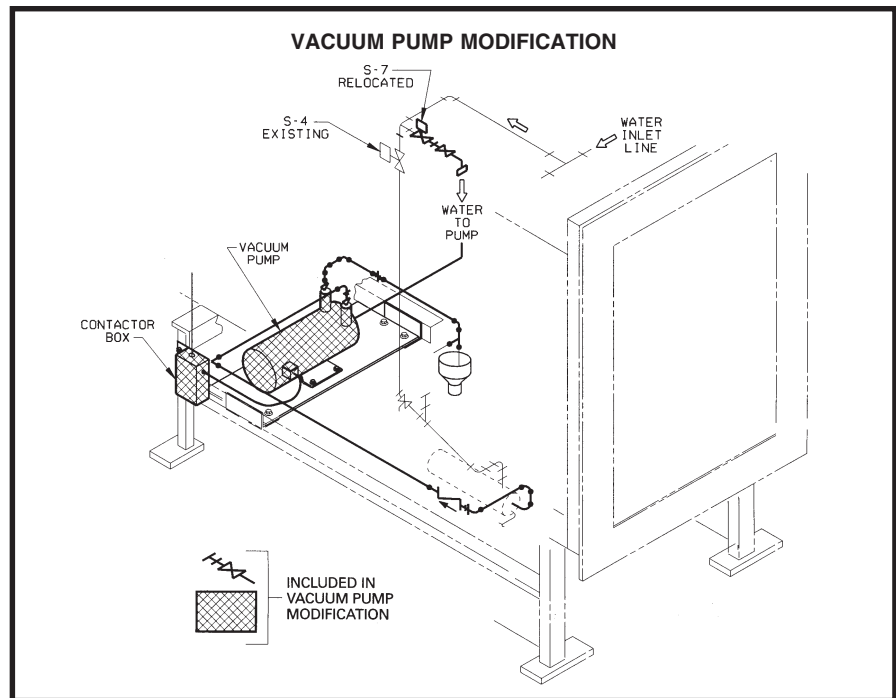
DESCRIPTION

This kit eliminates the water ejector and replaces it with a vacuum pump. The water ejector is effective, but uses a high volume of water to operate. The vacuum pump can perform this same function, but uses much less water. Peak consumption can drop from approximately 6 gpm to 1.5 gpm. For a typical 20 minute dry phase cycle, consumption can drop from 120 gallons to 30 gallons of water. Actual savings will be greater than this example because of savings that will occur during the conditioning phase.

The kit will require the facility to supply 3 phase power. See Reference List for amperage.

BENEFITS

- Reduced water consumption per cycle. The vacuum pump uses about 1/4 of the water that the water ejector uses.
- Water and sewer costs are reduced.
- Vacuum performance is unaffected by low water pressure.



(Typical only - some details may vary.)

REFERENCE LIST

Vacuum Pump Modification Kit for:

Eagle 2000 24x36" (208 VAC, 5.7 A)	P-762650-477
Eagle 2000 24x36" (240 VAC, 5.4 A)	P-762650-478
Eagle 2000 24x36" (440 VAC, 2.7 A)	P-762650-479
Eagle 3000 Stage 2 24x36" (208 VAC, 5.7 A)	P-762650-468
Eagle 3000 Stage 2 24x36" (240 VAC, 5.4 A)	P-762650-469
Eagle 3000 Stage 2 24x36" (440 VAC, 2.7 A)	P-762650-470
Eagle 3000 Stage 3 24x36" (208 VAC, 5.7 A)	P-762650-465
Eagle 3000 Stage 3 24x36" (240 VAC, 5.4 A)	P-762650-466
Eagle 3000 Stage 3 24x36" (440 VAC, 2.7 A)	P-762650-467

NOTE: Because of STERIS's continuing program of research and development, all specifications and descriptions are subject to change without notice. Obtain certified drawings for design and installation.

For further information and order placement, please contact: