

APPLICATION

The Basil 1000 Feeder Bottle Filler is a manifold-type unit designed to fill basket loads of feeder bottles used in the care of laboratory animals.

STANDARD

CE marking available upon request.

FEATURES

Units include a solenoid water valve and an electrical control panel with main power ON/OFF toggle switch, pushbutton reset timer, operating indicator light and a pushbutton for manual filling control.

Electrical cord is 6' (1829 mm) long. The Bottle Filler is built to seismic building code requirements.

Size (W x H x D)

Overall dimensions:

- 21-1/2 x 61-1/4 x 45-3/8"
 (546 x 1556 x 1153 mm)

Filler header configurations: (one must be ordered)

- 4 x 6 jets
- 5 x 5 jets
- 4 x 5 jets

CONSTRUCTION

Splash hood, drain pan, and legs are stainless steel 304, with integral, watertight welds. Filler legs are equipped with **adjustable feet** for leveling the unit.

The rails that are used to guide baskets are adjustable to accommodate various sizes of bottle baskets (12 3/8" to 17 5/32" wide) (314mm to 436mm).

Filler header accessory is constructed of stainless-steel 316 tubing with individual stainless-



(Typical only - some details may vary.)

steel 316 jets for each bottle. A **quick disconnect attachment** allows the header to be changed, as desired. **A filler header accessory must be ordered.**

Filler is equipped with a control-actuated valve and a quick operating, 1/4-turn **ball valve** with Teflon® seals and seats for maintenance purposes.

Valves and piping are made of stainless steel 304.

ACCESSORIES

Filler Headers are available with 4 x 6, 4 x 5 or 5 x 5 configurations.

NOTES

1. Piping terminations are female.
2. Connection to building drain not provided by STERIS.

¹ Teflon® is a registered trademark of DuPont.

The Selections Checked Below Apply To This Equipment

ACCESSORY (ONE MUST BE SELECTED)*

- Filler Header Configuration
 - 4 x 6
 - 5 x 5
 - 4 x 5

* Refer to SD633 for additional accessories.

Item _____

Location(s) _____

UTILITY REQUIREMENTS

Cold Water

3/4" NPT; 5 psig (34 kPa) dynamic minimum.

Drain

1-1/2" NPT sanitary connection.

Electricity

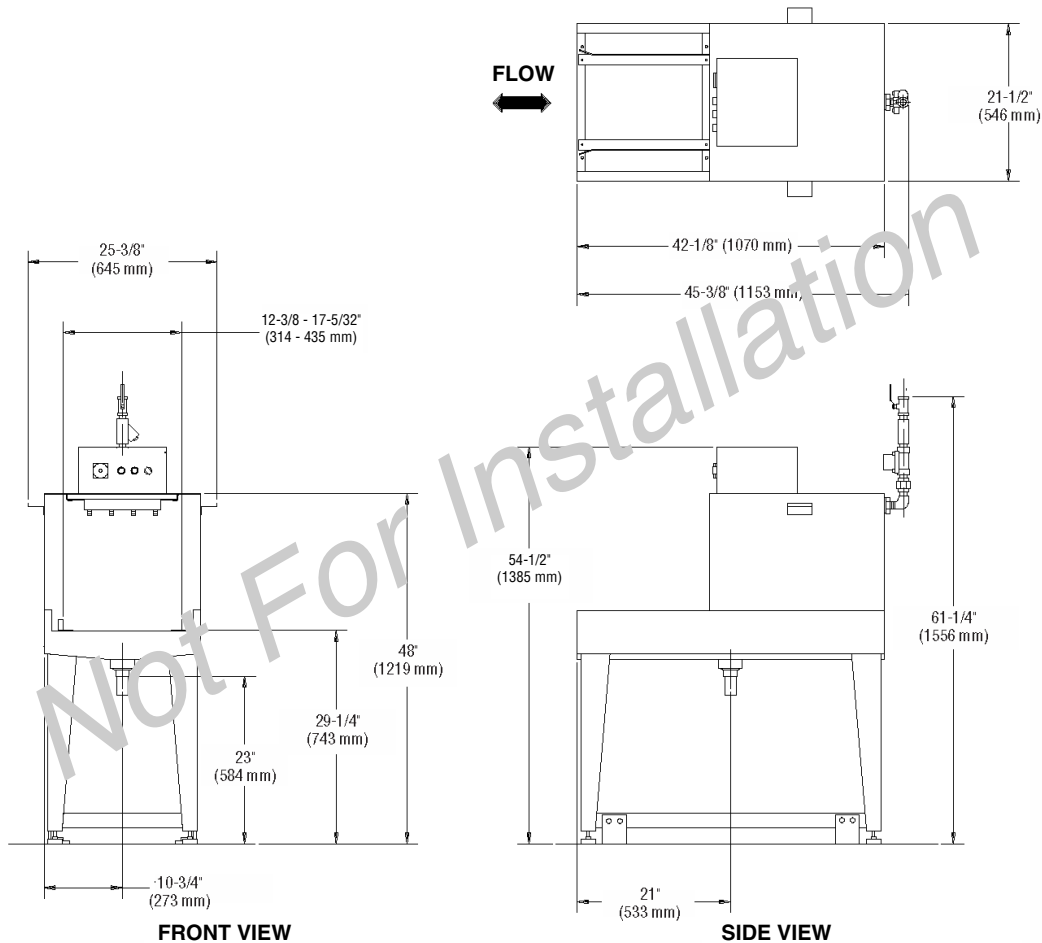
120 V, 60 Hz, 1-Phase, 2-wire, 1 Amp.

Other voltages available upon request.

NOTE: BSPT fittings available upon request.

CUSTOMER IS RESPONSIBLE FOR COMPLIANCE WITH APPLICABLE LOCAL AND NATIONAL CODES AND REGULATIONS.

Request Equipment Drawings for Installation Details



For Further Information, contact:



STERIS Corporation
5960 Heisley Road
Mentor, OH 44060-1834 • USA
440-354-2600 • 800-548-4873
www.steris.com

The base language of this document is ENGLISH. Any translations must be made from the base language document.