

Keep Your Pipes Clean

Stand Alone Steam Generators - Automatic Pressure Blow-Down Application



Application

For use on CES Chromalox stand alone steam generators.

Description

Two kits available:

Kit #1 - The auto blow-down kit provides plumbing and control to allow the blow-down of the generator on a timed, automatic basis. The user can set the time of day and length up time (up to 60 seconds) that pressure blow-down occurs. No additional utilities are required to install this kit.

Note that effluent will be under high pressure (up to 80 psig) and temperature (212° F) and will require either facility piping that can accept such pressure and temperature or kit #2.

Kit #2 - The blow-down separator with temperature control provides an ASME holding tank that will capture the hot effluent from the generator and mix with cold water so that final drain effluent to the facility drain system will be below 140° F, meeting most plumbing codes. The blow-down separator will require, supplied by others, two (2) cold water supply connections (3/4" npt), plumbing connection between the generator and blow-down separator, and a vent stack connection (4" npt) for vapors.

Features and Benefits

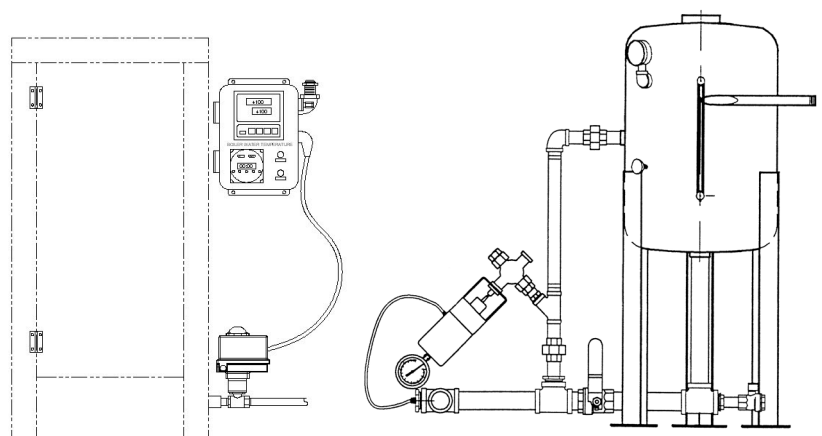
- High pressure blow-down of the generator will prolong the service life of the CES Chromalox unit by removing most scale and harmful by products of the steam generation process.
- Reduces/eliminates need for manual blow-down
- Reduces maintenance requirements in non-optimal water environments
- Extends the time period between generator descaling
- Improves life of the heater elements

Reference List/Order Numbers

For use on Chromalox CES stand alone generators only.

Kit #1 – Auto blow-down kit P-755716-666

Kit #2 – Blow-down separator P-755716-667



STERIS Corporation
5960 Heisley Road
Mentor, OH 44060-1834 · USA
440-354-2600 · 800-548-4873
www.steris.com